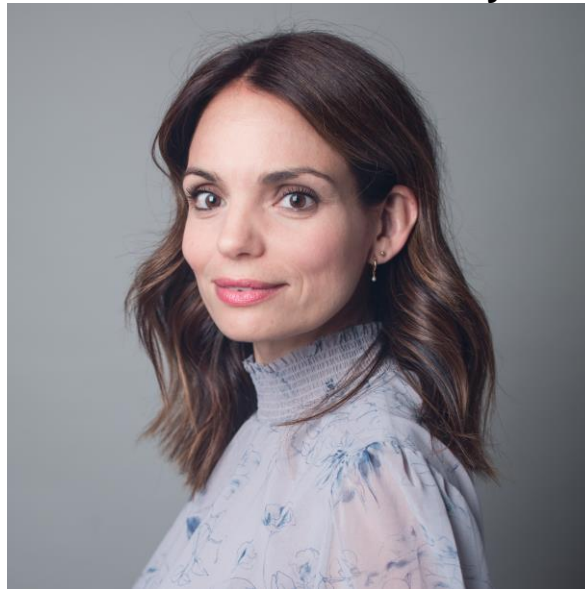


## Mental Health and Society

June 30<sup>th</sup>, 2023  
12:00PM-1:00PM  
Online

Understanding the Suicide Spectrum in Young People:  
Insights from the Quebec Longitudinal Study of Child Development

### Marie-Claude Geoffroy



The Quebec Longitudinal Study of Child Development (QLSCD), managed by Institut de la Statistique du Québec, is a valuable resource for understanding the suicide spectrum in young people, including suicidal ideation, non-suicidal self-injury, suicide attempts, and related emergency visits, particularly from a developmental perspective. The cohort has been following the lives of over 2000 individuals since their birth in 1997, providing longitudinal data on a range of factors that may contribute to the development of suicidal ideation and behaviors. In 2021, the cohort was linked with medical records. This presentation will provide a brief overview of the QLSCD, including the longitudinal epidemiology of suicide variables, and highlights some key discoveries for the field of suicide. In addition, two post-doctoral researchers will present their ongoing studies using QLSCD. **Dr. Tianna Loose** will present her study on childhood poverty and its association with suicidal ideation and attempts by early adulthood. **Dre Davisse-Paturet** will present her study on the trajectories of suicidal ideation among 2SLGBTQ+ youth and the role of social support. The findings from these studies will contribute to the understanding of risk and protective factors for suicide and inform prevention efforts.

Meeting ID: <https://mcgill.zoom.us/j/83625973668>

Please join us with your great ideas and thoughts on this topic!